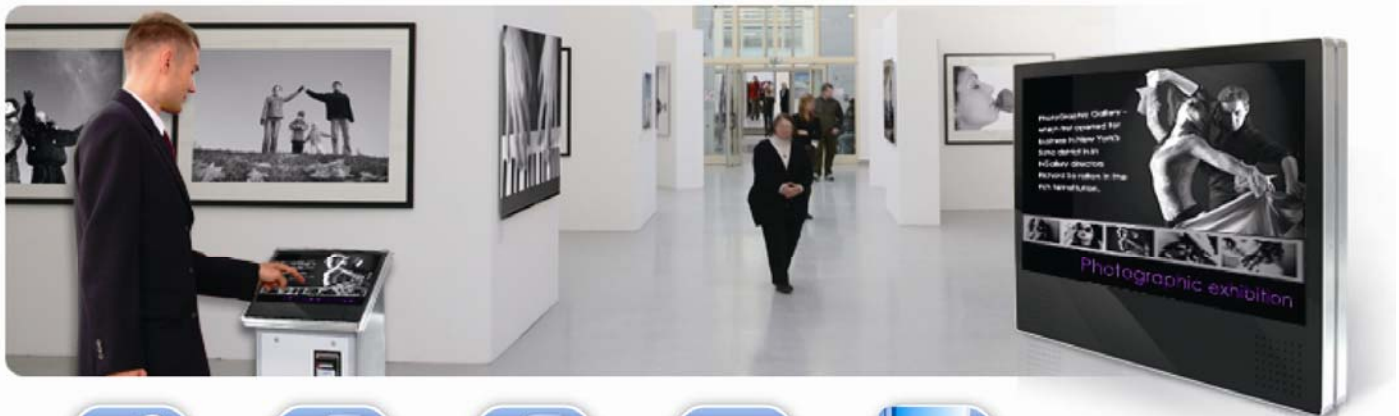


SRK-POI15/ SRK-POI17/ SRK-POI19/ SRK-POI22

All-In-One Embedded System
Embedded WEB POP
15"/ 17"/ 19"/ 22" Touch Screen
Supports CF Memory Card
Supports VESA 100



Embedded
WEB PLayer



Shpckwave Flash
(SWF)



Java
Script / Applets



CF Card



Touch Screen
(resistive / capacitive)



RJ-45
Ethernet Port



VGA Out



USB Ports



VESA Hole
100x100 mm



Optional
Wall Mount

INTRODUCTION

The **SRK-POI15/ SRK-POI17/ SRK-POI19/ SRK-POI22** is a self-service terminal which integrates hardware and software to create an interactive environment such as product display for sale, and information display for multimedia. The users can move, drag or drop contents on the 15"/ 17"/ 19"/ 22" touch screen with hand.

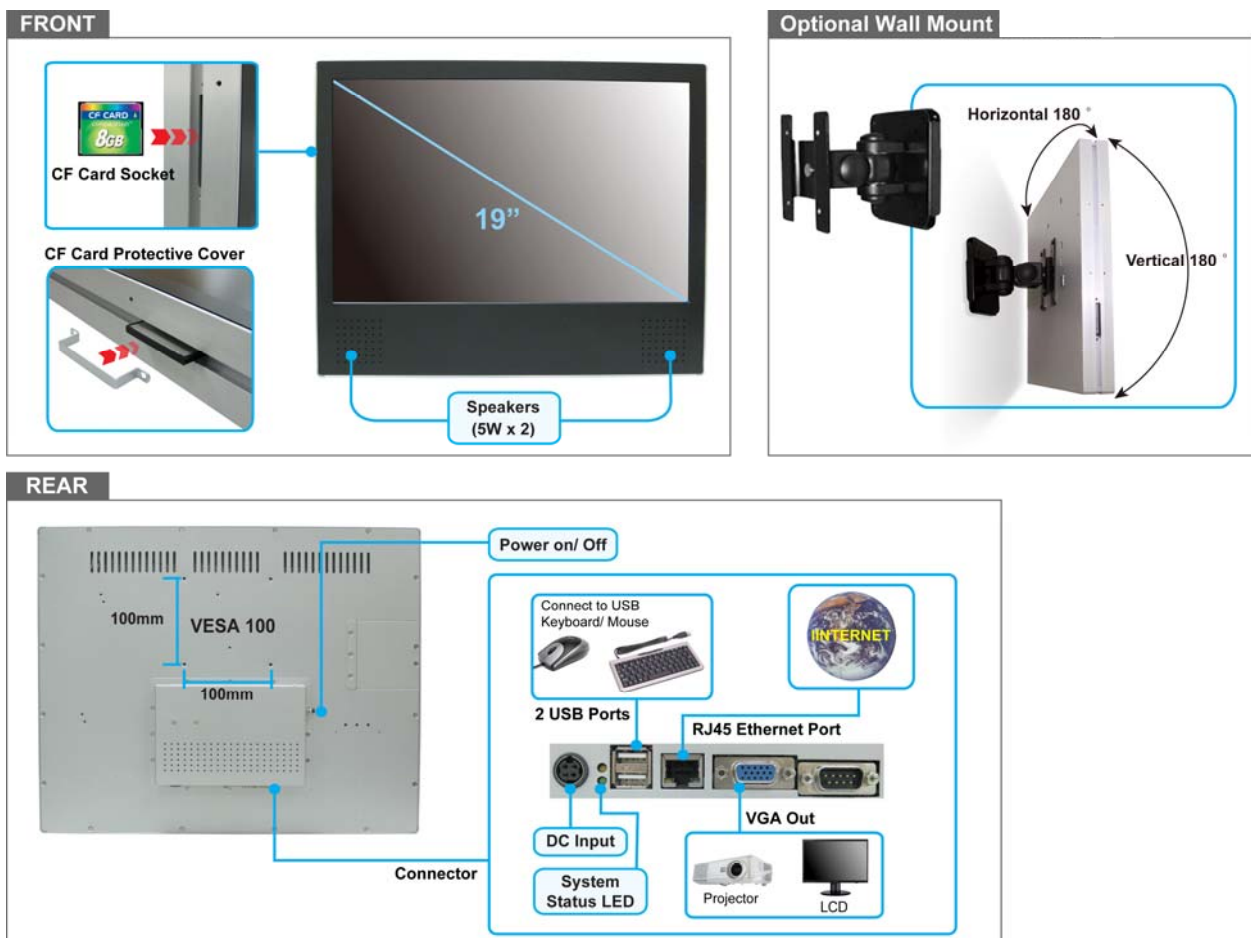
The **SRK-POI15/ SRK-POI17/ SRK-POI19/ SRK-POI22** can directly play the HTML web page on the Internet or on the CF card. The contents (W3C WEB standard) can be edited and applied layout design easily,

The **SRK-POI15/ SRK-POI17/ SRK-POI19/ SRK-POI22** can be used in department stores, exhibitions, libraries, office buildings, airports, and other public places for advertising, presentations, training and other media applications.

FEATURES

- Built-in 15"/ 17"/ 19"/ 22" TFT-LCD display and stereo speakers (5W x 2).
- Supports Touch Screen function.
 - **Resistive** Touch Screen
 - **Capacitive** Touch Screen
- Web based content (W3C WEB Standard) management solution allows you to edit and apply layout design easily.
- Supports **Shockwave flash (SWF)** format.
- Supports **Java Script/ Applets**.
- Supports CF memory card.
- Supports 2 USB ports for connecting to USB keyboard and mouse.
- Supports VGA out for connecting to external LCD or projector.
- Provides RJ-45 port for connecting to an Ethernet network.
- Support VESA 100 (100mm x 100mm).
- Optional Wall Mount (WM01)
 - Holds 10" to 22" LCD monitor (VESA 75x75 mm & VESA100x100 mm) up to 15kg.
 - Arm length: 102mm.
 - Three adjustable joints: Horizontal 180 degrees/ Vertical 180 degrees/ Swivels 360 degrees.
- All-in-one embedded System
 - CPU: VIA C7 1.5GHz
 - Memory: 1GB DDR II
 - Storage: Flash Memory option
 - OS: Linux Kernel 2.6.x

CONNECTION



SPECIFICATION

Product		SRK-POI15	SRK-POI17	SRK-POI19	SRK-POI22
Media File Format		HTML WEB Page			
Storage		CF Card			
Input		RJ45 Ethernet Port			
Resolution		1024 x 768			1680 x 1050
Features		All-in-one Embedded System			
		Directly play the HTML web page on the Internet or stored on the CF card			
		The contents (W3C WEB standard) can be edited and applied layout design easily			
		Supports Shockwave Flash (SWF)			
		Supports Java Scripts/ Applets			
		Supports 2 USB ports for connecting to USB keyboard and mouse			
		Supports VGA out for connecting to external LCD or projector			
		Directly move and drag contents on the touch screen with hand - Resistive Touch Screen - Capacitive Touch Screen			
System	CPU	VIA C7 1.5GHz			
	Memory	1GB DDR II			
	Storage	Flash Memory Option			
	Operating System	Linux Kernel 2.6.x			
Mounting Hole Pattern		VESA 100 (100mm x 100mm)			
Dimensions (W/ H/ D)		345x331x44.1mm	377x377x44.1mm	446x361x44.1mm	512.5x403.8x61mm
Panel	Size	15 inch (4:3)	17 inch (4:3)	19 inch (16:10)	22 inch (16:10)
	Brightness	225 cd/m ²	300 cd/m ²	300 cd/m ²	300 cd/m ²
	Interface	LVDS	LVDS	LVDS	LVDS

Supports Shockwave Flash (SWF)

Directly move & drag contents



Play Flash Game



Feel free to draw & write



