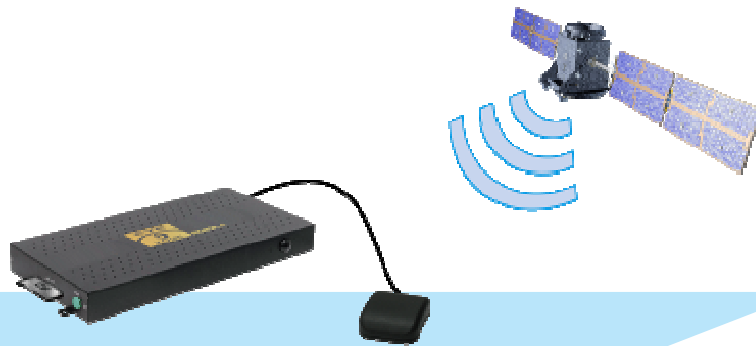


SIRKOM SRK-1080P-F

User Manual



FCC Notices

It's herewith confirmed to comply with the requirements of FCC Part 15 Rules. Operation is subject to the following two conditions:

- This device may not cause harmful interference.
- This device must accept any interference received, including interference that may cause undesired operation.

Note: This equipment has been tested and found to comply with the limits for a Class B digital device, pursuant to part 15 of the FCC Rules. These limits are designed to provide reasonable protection against harmful interference when the equipment is operated in a residential installation. This equipment generated uses and can radiate radio frequency energy and if not installed and used in accordance with the instruction manual may cause harmful interference to radio communications. However, there is no guarantee that interference will not occur in a particular installation. If this equipment does cause harmful interference to radio of television reception, which can be determined by turning the equipment off or on, the user is encouraged to try to correct the interference by one or more of the following measures:

- Reorient or relocate the receiving antenna.
- Increase the separation between the equipment and receiver.
- Connect the equipment into an outlet on a circuit different from that to which the receiver is connected.
- Consult the dealer or an experienced radio TV technician for help.

CE Declaration

This device complies with CE class B.

EN55022	IEC 61000-4-4
EN61000-3-2	IEC 61000-4-5
EN61000-3-3	IEC 61000-4-6
EN55024	IEC 61000-4-8
IEC 61000-4-2	IEC 61000-4-11
IEC 61000-4-3	

Printed in Spain

All contents are subject to change without notice.

All trademarks are the property of their respective owner.



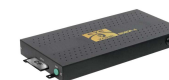
Jul 27, 09

CONTENTS

1. Package Contents.....	1
2. Introduction.....	1
3. Features.....	2
4. Hardware Overview.....	3
5. Remote Control.....	4
5.1 Entering Text or IP Address.....	4
6. Start the SRK-1080P-F.....	5
7. Setting Up.....	6
7.1 Network Setup.....	6
7.2 FTP Setup.....	8
7.3 Video Setup.....	10
7.4 Other Setup.....	11
8. Using the SRK-1080P-F.....	13
8.1 Play Media Files on the CF Card.....	13
8.2 Download Function.....	16
8.3 Play the Media Files on the PC.....	19
8.4 Download/ Upload Media Files.....	22
8.5 RS-232 Function.....	25
9. Http Command Function.....	26
9.1 Player Control.....	27
9.2 Network Setup.....	28
9.3 Timer Setup.....	29
10. GPS Function.....	30
11. Troubleshooting.....	32

1. PACKAGE CONTENTS

1. SRK-1080P-F
2. GPS Antenna
3. Remote Control
4. Audio Cable
5. S-Video Cable
6. Power Adapter
7. User Manual



B1080P-6



GPS Antenna



Remote Control



Audio Cable



S-Video Cable



**Power Adapter
(DC 12V, 1.5A)**



User Manual

2. INTRODUCTION

SIRKOM SRK-1080P-F is a full HD digital signage that built-in Global Positioning System (GPS) module. SIRKOM SRK-1080P-F will receive the microwave signal from satellites and continuously provide the current location positioned and play the associated media file according to its location.

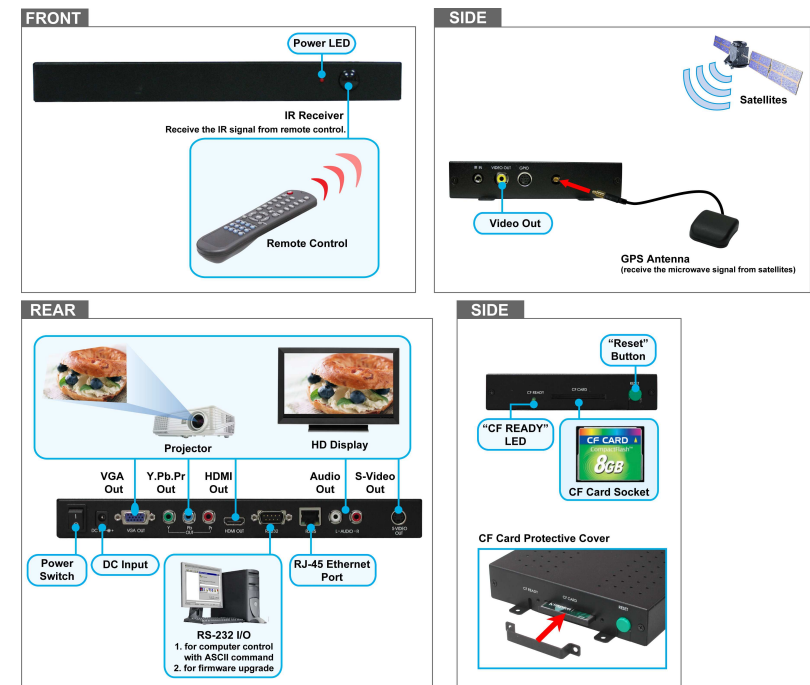
SIRKOM SRK-1080P-F can play HD WMV9 and WMA files from CF memory card without a computer. SIRKOM SRK-1080P-F supports High Definition movie hardware decode acceleration, presents for you the smoother and clearer picture, it supports high resolution video output such as 1080P / 1080i / 720P for movie theater quality video on a big screen. By connecting to S-Video, Y.Pb.Pr, VGA (resolution up to 1360 x 768), HDMI (1920 x 1080P) and Audio, you can play media files on any display device.

SIRKOM SRK-1080P-F can be installed on the tourist bus, train or taxi to play the local attractions, station information or latest promotion.

3. FEATURES

- Built-in Global Positioning System (GPS) module that receive the microwave signal from satellites and play the associated media file according to its location.
- Supports multiple file formats: HD WMV9 and WMA.
- Supports Video, S-Video, Y.Pb.Pr, HDMI, VGA and Audio output.
- HD Y.Pb.Pr output supports resolution: NTSC Mode(60Hz): 480P/ 720P/ 1080i.
PAL Mode(50Hz): 576P/ 720P/ 1080i.
- HDMI Output: 480P/ 720P/ 1080i/ 1080P.
- VGA output supports resolution: 640x480/ 800x600/ 1024x768/ 1280x1024/ 1360x768.
- Supports RS-232 port for computer control with ASCII command (play, stop, pause...etc).
- Supports CF memory card. (Suggest using the high speed (150X) CF card)
- The source of HD WMV9 MP@HL (Main Profile / High Level) supports resolution up to 1920x1080 (1080P) and the maximum bit rate is 12Mbps.
- Exports the Configuration Value: You can export the configuration value to the CF card. The configuration value can be modified on your PC, and can be applied to the SRK-1080P-F or others.
- Supports Auto Key Lock function.
- Connect using an Ethernet network cable at up to 100Mbps.
- Supports HTTP Command function.
- Compatible with Windows Media Player 11: Play media files stored in a network computer.
- Supports FTP Auto Download Function: Connect to Remote FTP server and download data to the CF card automatically.
- Supports Download Pause / Resume Function: Continue unfinished downloads upon next session.
- Embedded FTP Server.
- Supports NTP Network (G.M.T) Timer. You can also set the system time manually.
- Supports Universal Plug and Play (UPnP) and DHCP.
- Supports SLIDE SHOW Function.

4. HARDWARE OVERVIEW



- **Power Switch:** Toggle between main power on & off.
- **DC Input:** For the power adapter. (DC 12V / 1.5A)
- **VGA Out:** Connects to devices that support VGA input. (LCD, projector)
- **Y.Pb.Pr Out:** Connects to devices that support Y.Pb.Pr input. (HDTV, projector)
- **HDMI Out:** Connects to devices that support HDMI input.
- **RS-232 Connector:** Used for computer control with ASCII command.
- **RJ-45 Ethernet Connector:** Connects to router or PC by RJ-45 Cable.
- **Audio Out:** Connects to sound input. (HDTV with amplified speaker)
- **S-Video Out:** Connects to devices that support S-Video input. (HDTV, projector)
- **Video Out:** Connects to device that support Video input. (HDTV, projector)
- **GPS Antenna Connector:** Connects to the provided GPS antenna.
- **"CF READY" LED:** Steady green confirms that the CF card is inserted correctly.
- **CF Card Socket:** Insert your CF card with media files.
- **"RESET" Button:** To restart the SRK-1080P-F.

5. REMOTE CONTROL



- 1 Power on/ off
- 2 Select the output mode
- 3 Numeric Key
- 4 Delete last entry
- 5 Select a function or to play the selected file
- 6 Open the setup menu Mute sound
- 7 OSD display function on/ off
- 8 Auto-play function on/ off
- 9 Mute sound
- 10 Volume up/ down
- 11 Move the cursor
- 12 Confirm the selection/ entry
- 13 Go back one layer
- 14 Select the TV type (NTSC/ PAL)
- 15 Shuffle on & off
- 16 Play the file selected
- 17 View the previous/ next file
- 18 Select the repeat mode
- 19 Rewind/ forward movie or music files
- 20 Stop playback
- 21 Show the information of the file selected
- 22 Search video (movie) timeframe
- 23 Zoom in/ out on the movie or picture
- 24 Pause the playback or play frame by frame

5.1 ENTERING TEXT OR IP ADDRESS

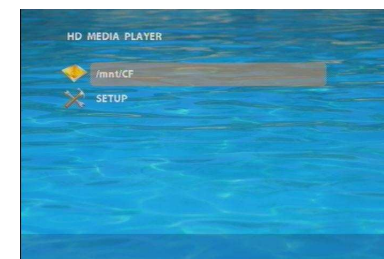
- Keys need to be pressed multiple times to enter the letter corresponding to that key.
For Example: To enter the letter “a”. You would press the button “2” twice.
- **Enter The IP Address**
For Example: To enter the IP address”192.168.100.100”,
Step 1: Press “1” once, then “1” is displayed, and the color of “1” is orange.
Step 2: When the color of “1”turns white, press “9” once, then “9” is displayed.
Step 3: Repeat steps 1 and 2 to enter and complete the IP address.

6. START THE SRK-1080P-F

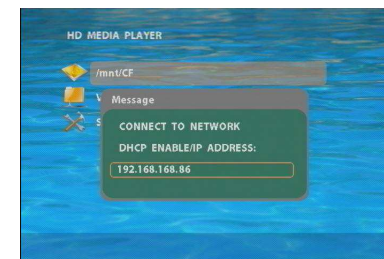
- **Power On**
 - Insert the CF memory card that has Picture, Music, Movie or WMV9 files.
 - Press the “POWER” button to power on the SIRKOM SRK-1080P-F, and then press the “TV MODE” button to select the output mode.

NOTE: The SRK-1080P-F can’t be turned on without inserting the CF card.

- **Status After Power On**
 - **Status 1:** If the “AUTOPLAY (Movie, Picture or All Files)” function is enabled and there are media files on the CF card, the SIRKOM SRK-1080P-F will auto play media files after power on.
 - **Status 2:** If the “AUTOPLAY” function is disabled, after power on the main menu will appear as shown in the following figure. There are two groups in the main menu (“/mnt/CF” and “SETUP”).



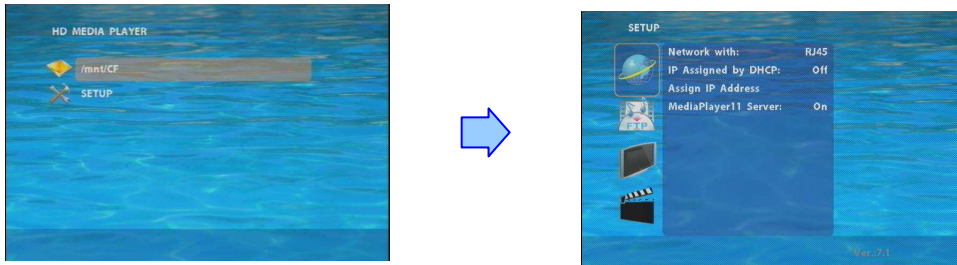
NOTE: The pop-up window that shows the IP address will appear later, if DHCP mode is selected when the SIRKOM SRK-1080P-F is turned on.



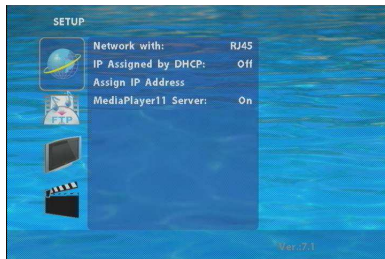
- **Power Off:** Press the “POWER” button again to power off.

7. SETTING UP

- In the main menu, using the “▼” button on remote control to select the “**SETUP**” item, and then press the “ENTER” button. You will be presented with the SRK-1080P-F settings screen.
- You can also press the “**SETUP**” button on remote control to directly open the settings screen. (If there is file that is being play, please stop first.)
- There are four groups of sub-menu in the main menu (“Network Setup”, “FTP Setup”, “Video Setup” and “Other Setup”).
- In the settings screen, you can use the “▲、▼、◀、▶” buttons to select an item, and press the “ENTER” button to confirm the selection.
- Press the “**SETUP**” button on remote control to save and quit the settings screen.



7.1 NETWORK SETUP



- **Network with:** Select your network connection Disable/ RJ45.
- **IP Assigned by DHCP:** If you have a DHCP-enabled router, please select “On”, and then the router will automatically assigns an IP address to the SIRKOM SRK-1080P-F. If you don't have a DHCP –enabled router, select “Off” and type the network information in “**Assign IP Address**”.

7.1 NETWORK SETUP (continued)

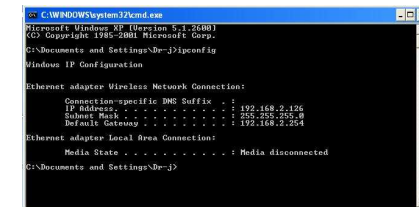
- **Assign IP Address:** If the SIRKOM SRK-1080P-F is connected to a network without a DHCP server or you want to use Local FTP Server function, enter the fixed IP address, Mask, Gateway and DNS for the SIRKOM SRK-1080P-F.

PS. Refer to 5.1 for how to enter IP address by remote control.

NOTE: Before setting the IP address, Mask, Gateway and DNS, check the network information of your PC. Please follow the steps below to get the network information of your PC.

Step 1: Click on “Start” → “Run” and type in “command”, then press “ENTER”.

The MS-DOS window will appear, type in “ipconfig” and then press “ENTER” to get the network information.



Step 2: Assign IP Address, Mask (Subnet Mask) and Gateway (Default Gateway) for the SRK-1080P-F.

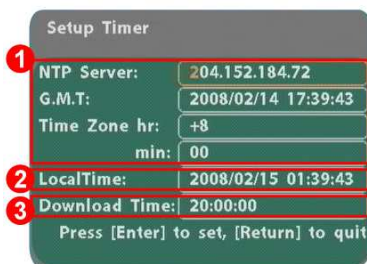
Enter the same values of the Subnet Mask and Gateway, and be careful not to enter the values of IP address that are already used by other devices on the network.

- **Media Player 11 Server:** Enable/ disable the Media Player 11 server.

7.2 FTP SETUP



- **Local FTP Server:** Turn on/ off the SIRKOM SRK-1080P-F server.
(If you use the SIRKOM SRK-1080P-F server, please disable the DHCP function and input a fixed IP address, Mask, Gateway and DNS of the SIRKOM SRK-1080P-F)
- **Local FTP Server Setup:** Set the "Port", "User ID" and "Password" of the SIRKOM SRK-1080P-F.
(The Default Port: 21, User ID: root, Password: admin)
- **FTP Auto Download:** Enable/ Disable the FTP auto download function.
- **Remote FTP Download Setup**
 - **Server IP:** Enter the domain name or IP address of the FTP as was given to you by your Web hosting provider.
 - **Port:** The default port for FTP is 21. In most cases you should not change this number. If the FTP site uses a port other than 21, you should enter the correct port.
 - **User ID:** Enter the user name of the Remote FTP server.
 - **Password:** Enter the Password of the Remote FTP server.
 - **FTP Path:** Enter the folder path that you want to share.
- **NTP Server:** Enable/ Disable the NTP server function. (if the SRK-1080P-F isn't connect to internet, please disable the NTP Server function)
- **Time Setup:** Set the **NTP Server**, **Local Time** and **Auto Download Time** here.



- ① **NTP Server** (the SIRKOM SRK-1080P-F must be already connected to the network)
- NTP Server: Enter the NTP server IP address like: 204.152.184.72.
 - G.M.T: After SRK-1080P-F get the time from NTP server, it will update the G.M.T field.
 - Time Zone: Use the **Volume +, -** and **Numeric Key** to set the time zone of your location.
(time zone must be set properly for the **Auto-Download** and **Schedule** functions)

NOTE: GMT and applied regions

Time Zone	Region
(GMT-12:00)	Eniwetok, Quazalen
(GMT-11:00)	Midway, Ireland, Samoa
(GMT-10:00)	Hawaii
(GMT-09:00)	Alaska
(GMT-08:00)	Pacific GMT (U.S. & Canada); Tijuana
(GMT-07:00)	Continental GMT (U.S. & Canada)
(GMT-07:00)	Arizona
(GMT-06:00)	Mexico city
(GMT-06:00)	Saskatchewan
(GMT-06:00)	Eastern Coast GMT (U.S. & Canada)
(GMT-06:00)	Indiana (Eastern Coast)
(GMT-04:00)	Atlantic GMT (Canada)
(GMT-04:00)	Santiago
(GMT-04:00)	Caracas, La Paz
(GMT-04:00)	Newfoundland
(GMT-03:00)	Greenland
(GMT-03:00)	Buenos Aires, Georgetown
(GMT-03:00)	Brasilia
(GMT-02:00)	Mid-Atlantic
(GMT-01:00)	Capo Verde Is.
(GMT-01:00)	Azores
(GMT-00:00)	Greenwich GMT; Dublin, Edinburgh, Lisbon, London
(GMT-00:00)	Casablanca, Monrovia
(GMT+01:00)	Beograd, Bratislava, Budapest, Ljubljana, Prague
(GMT+01:00)	Brussels, Copenhagen, Madrid, Paris
(GMT+01:00)	Sarajevo, Skopje, Sofia, Vilnius, Warsaw, Zagreb
(GMT+01:00)	Midwest Africa
(GMT+01:00)	Amsterdam, Berlin, Bern, Rome, Stockholm, Vienna
(GMT+02:00)	Bucharest
(GMT+02:00)	Athens, Istanbul, Minsk
(GMT+02:00)	Jerusalem
(GMT+02:00)	Cairo
(GMT+02:00)	Harare, Pretoria

Time Zone	Region
(GMT+02:00)	Helsinki, Riga, Tallinn
(GMT+03:00)	Nairobi
(GMT+03:00)	Moscow, Saint Petersburg, Volgograd
(GMT+03:00)	Baghdad
(GMT+03:00)	Kuwait, Raid
(GMT+03:30)	Tehran
(GMT+04:00)	Baku, Tbilisi, Ere van
(GMT+04:00)	Abu Dhabi, Muscat
(GMT+04:30)	Kabul
(GMT+05:00)	Yekaterinburg
(GMT+05:00)	Islamabad, Karachi, Tashkent
(GMT+05:30)	Calcutta, Chennai, Mumbai, New Delhi
(GMT+05:45)	Katmandu
(GMT+06:00)	Sri Jayewardenepura Kotte
(GMT+06:00)	Astana, Dakar
(GMT+08:00)	Irkutsk, Ulan Bator
(GMT+08:00)	Kuala Lumpur, Singapore
(GMT+08:00)	Taipei
(GMT+08:00)	Perth
(GMT+09:00)	Seoul
(GMT+09:00)	Yakutsk
(GMT+09:00)	Osaka, Sapporo, Tokyo
(GMT+09:30)	Darwin
(GMT+09:30)	Adelaide
(GMT+10:00)	Guam, Port Moresby
(GMT+10:00)	Brisbane
(GMT+10:00)	Vladivostok
(GMT+10:00)	Canberra, Melbourne, Sydney
(GMT+10:00)	Hobart
(GMT+11:00)	Magadan, Solomon Is., New Caledonia
(GMT+12:00)	Auckland, Wellington
(GMT+12:00)	Fiji, Kamchatka Pen., Marshall Is.
(GMT+13:00)	Nuku'alofa

② **Local Time:** Set the system time manually.

NOTE: If the **NTP Server** and **Local Time** have been set, the NTP Server will be the first priority (the SIRKOM SRK-1080P-F is already connected to the network).

③ **Download Time:** Set the FTP auto-download time.

- **Local HTTP Server:** Enable/ Disable the HTTP command function.
- **Local HTTP Server Setup:** To set the “Port”, “User ID” and “Password” of the SIRKOM SRK-1080P-F. (The Default Port: 80, User ID: root, Password: admin)

NOTE: Press the “**SETUP**” button on the remote control to save the settings, and it will auto exit the settings screen, then restart the SIRKOM SRK-1080P-F.

7.3 VIDEO SETUP

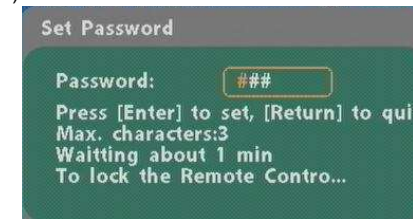


- **TV Standard:** Select the output TV video format (NTSC / PAL).
- **NTSC Active Output:** Select the output mode. (HDMI/ SD Video/ VGA/ HD Y.Pb.Pr)
You can also press directly the “TV MODE” button on the remote control to select output mode.
- **Aspect-ratio:** Select TV mode 4:3, 16:9 or 16:10.
- **HDMI:** Select the HDMI output resolution among 480i / 480p / 720p / 1080i / 1080p.
Select the “Auto EDID”, the SIRKOM SRK-1080P-F will scan the display device connected and set the correct resolution automatically.
- **SD Video:** Select the SD output mode. (“Video/ S-Video” or “Y.Cb.Cr”)
- **VGA 60Hz:** Select the VGA output resolution.
(640*480 / 800*600 / 1024*768 / 1280*1024 / 1360*768)
- **HD Y.Pb.Pr 60Hz:** Select the Y.Pb.Pr output resolution among 480p / 720p / 1080i.

7.4 OTHER SETUP



- **Play OSD Display:** Enable or disable the OSD display.
- **Auto Play**
 - Movies: Auto play movie files on the CF card after power on.
 - Pictures: Auto play picture files on the CF card after power on. (slideshow function)
 - All Files: Auto play all the media files on the CF card after power on.
 - Off: Turn off the Auto Play function.
- **SlideShow Interval Times:** Set the time each photo is shown (10/ 15/ 30 seconds, 1/ 10/ 15/ 30 minutes or 1 hour).
- **Lock Remote Controller:** Enable/ disable the auto key lock function. (The SRK-1080P-F will auto lock when there is no further input for 1 minute.)
- **Lock Password Setup:** Press the “Enter” button to open the “Set Password” window. Enter the password with numeric buttons and press the “Enter” button to save the new password (The default password: 123).



7.4 OTHER SETUP (continued)

- **Export Setting File:** Press the “Enter” button to export the configuration value to the CF card.



- Copy the file “HDPlayerSetting.txt” on CF card to your PC. Use the “Wordpad” to open the file, and you can see all the configuration value of SRK-1080P-F.
- You can modify directly the configuration value on your PC.

Example. [AutoPlay] Off Options: Movies, Pictures, Off

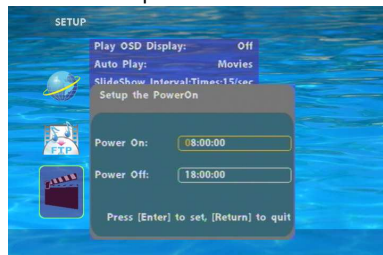
The “Auto Play” function is turned off, you can change directly the mode to Movies or Pictures.

```
[TVStandard] NTSC Options:NTSC,PAL
[AspectRatio] TV_16_9 Options:TV_4_3,LETTERBOX
[AutoPlay] Off Options:Movies,Pictures,Off
[PlayButton] All Options:All,Default
```



```
[TVStandard] NTSC Options:NTSC,PAL
[AspectRatio] TV_16_9 Options:TV_4_3,LETTERBOX
[AutoPlay] Movies Options:Movies,Pictures,Off
[PlayButton] All Options:All,Default
```

- Copy the completed file “HDPlayerSetting.txt” from PC to CF card. Insert the CF card to the SRK-1080P-F, the SRK-1080P-F will apply the new settings automatically.
- **Play Button:** Use for configuring the Repeat method of SRK-1080P-F when use it with other accessory, like “Play Button”, “Touch Sensor Button” and “GPS” function. The SIRKOM SRK-1080P-F supports two options, Repeat Default / Repeat All.
 - Repeat All** : When “Repeat Default” is selected, the SRK-1080P-F will repeatedly play the first demo file in the CF card.
 - Repeat Default:** On the other hand, when “Repeat All” is selected, the SRK-1080P-F will repeatedly play all the demo files in the CF card, in turns of the file name’s alphabetical order.
- **Auto Power On/ Off:** Enable/ Disable the Auto Power On/ Off function.
- **Auto Power Setting:** Set the time of power on/ off.

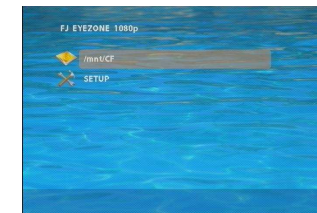


- **Transition effect:** Set transition effects between photos.

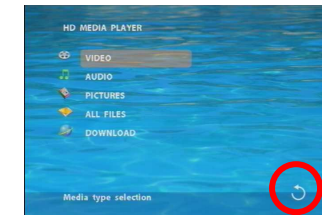
8. USING THE SRK-1080P-F

8.1 PLAY MEDIA FILES ON THE CF CARD


Step 1: Insert the CF card with media files, then turn on the SIRKOM SRK-1080P-F and press the “ENTER” button on the remote control when “mnt/CF” is highlighted to take you into the CF card.



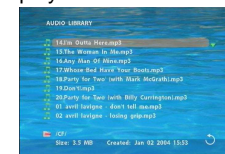
Step 2: Select the type of data (VIDEO/ AUDIO/ PICTURES) you want to play, and then press the “ENTER” button on remote control to take you into the “VIDEO LIBRARY”, “AUDIO LIBRARY” or “PICTURE LIBRARY”. You can also select the **ALL FILES** item, and it will list all the media files on the CF card.



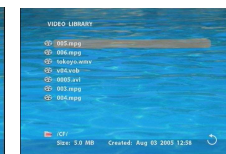
RETURN

PS. If the symbol  (return) appears on the screen, you can use “RETURN” button of the remote control to go back one layer.

Step 3: Select the file you want to play, and press “ENTER” or “PLAY” button on the remote control to play the file.



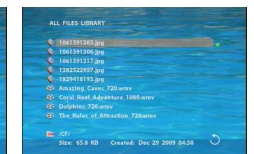
VIDEO LIBRARY



AUDIO LIBRARY



PICTURE LIBRARY



ALL FILE LIBRARY

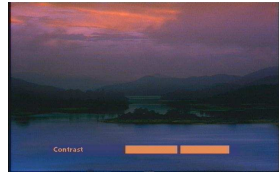
8.1.1 Using the Remote Control When Media File Is Playing

- **SETUP:** Press the button to adjust the brightness, contrast or saturation while the **video** or **picture** is playing. With the "+ VOLUME -" button.

- **First Press:** Adjust the brightness.
- **Second Press:** Adjust the contrast.
- **Third Press:** Adjust the saturation.



Brightness

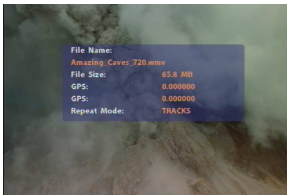


Contrast



Saturation

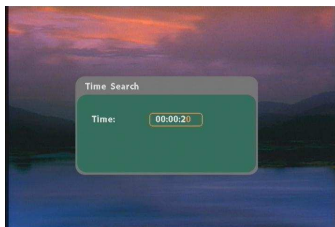
- **MUTE:** Mute the sound while the movie or music is playing.
- **+ VOLUME -:** Increase/ decrease the volume while the **video** or **music** is playing.
- **SHUFFLE:** Turn on/ off the shuffle function.
- **PREV / NEXT:** Play the previous/ next file.
- **REPEAT:** Select the repeat mode.
- **REV / FWD:** Rewind/ forward movie or music file.
- **STOP:** Stop playing, and go back one layer.
- **INFO:** Display the file information.



File and Coordinate Information

- **SERACH:** Search video (movie) timeframe.

Press the "SEARCH" button, and enter the initial time that you want to start at, then press the "ENTER" button to play.



- **PAUSE/STEP:** Pause the playback or play frame by frame.
- **ZOOM:** Zoom in/ out on the movie or picture.



Original Size



First Press : ZOOM 01



Second Press : ZOOM 02



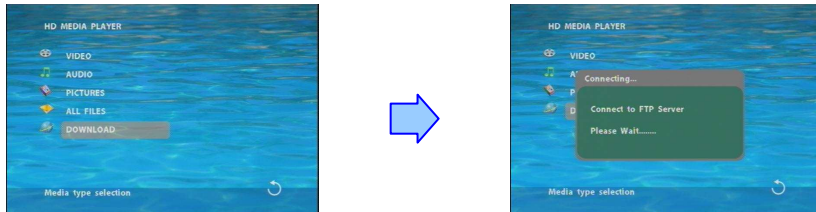
Third Press : ZOOM 03

8.2 DOWNLOAD FUNCTION

Before it downloading files from the FTP server, SIRKOM SRK-1080P-F will delete all contents on CF card except the file on the CF card and the FTP server are the same.

8.2.1 Manual Download Function

- Please confirm that the SIRKOM SRK-1080P-F is already connected to the network. (Refer to 7.1 Network Setup)
- Please use the “▼” button to select the “DOWNLOAD” item, and press “ENTER” button. The SIRKOM SRK-1080P-F will connect to the FTP server and download files automatically.
- Before download files, SIRKOM SRK-1080P-F will delete all contents on CF card first.



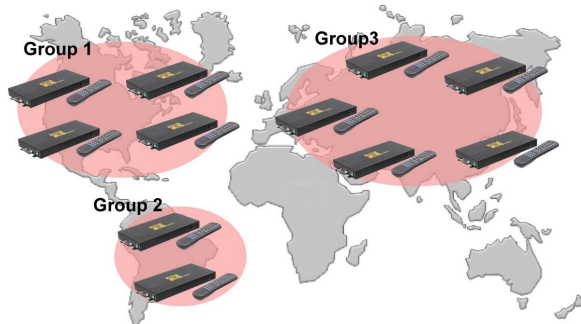
- The pop-up window that shows the status of download and the screen saver will appear while the SIRKOM SRK-1080P-F is downloading files. After finishing downloading files, the SIRKOM SRK-1080P-F will display the files automatically.



Screen Saver

8.2.2 Auto Download Function

- If there are more than one SIRKOM SRK-1080P-F, you can use ftp tools to divide them into different regional group.



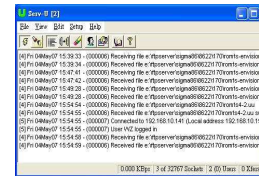
For example.

- Use the ftp tool “**Serv-U**” to divide into three groups, and setup the “User name”, “Password” and “FTP port number” of three groups for login ftp server.

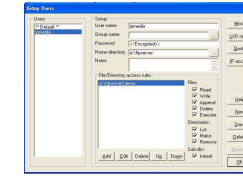
Group 1: User name: ipmedia/ Password: 0000/ FTP port number: 21

Group 2: User name: ipmedia2/ Password: 1111/ FTP port number: 21

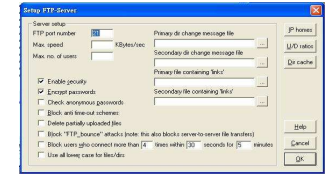
Group 3: User name: ipmedia3/ Password: 2222/ FTP port number: 21



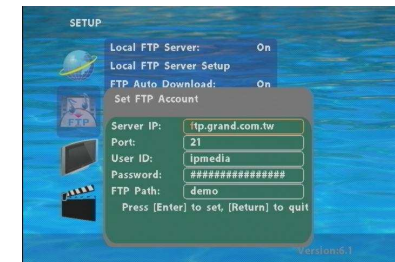
FTP tool : Serv-U



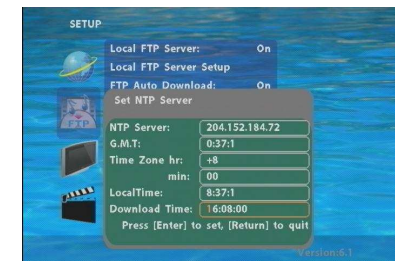
Setup “User name”, “Password” and “FTP port number”



- Enter the “**Remote FTP Download Setup**” window of SIRKOM SRK-1080P-F, and then type the same “User name (User ID)”, “Password” and “Port”. The SIRKOM SRK-1080P-F in group 1, please type the “User ID: ipmedia”, “Password: 0000” and “Port: 21”.



- Please enter the “**Network Timer NTP**” window of SIRKOM SRK-1080P-F, and set up the “**Download Time**”, then the SIRKOM SRK-1080P-F will download all the files from the FTP server at the designated time.



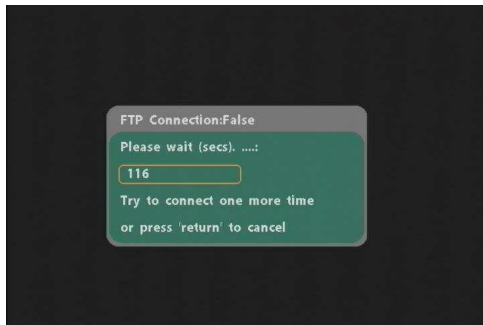
NOTE: The filename of the media files in FTP server cannot have any spaces.

8.2.3 Download Pause / Resume

SIRKOM SRK-1080P-F supports download pause/resume. You can press the “STOP” button to pause downloading media files. The SIRKOM SRK-1080P-F can continue unfinished downloads upon next session.



NOTE: If the network connection is unstable or broken, a pop-up window will appear as shown below. The SIRKOM SRK-1080P-F will attempt to resume downloading in 2 minutes. The user can terminate the download by pressing the “RETURN” button.

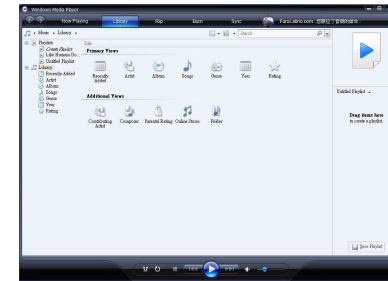


8.3 PLAY THE MEDIA FILES ON THE PC

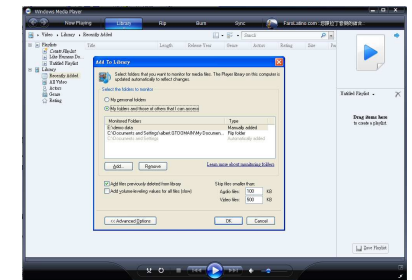
■ Using Windows Media Player Version 11 (Windows XP/ Vista only)

Step 1: Please download and install Windows Media Player Version 11 on your PC first.

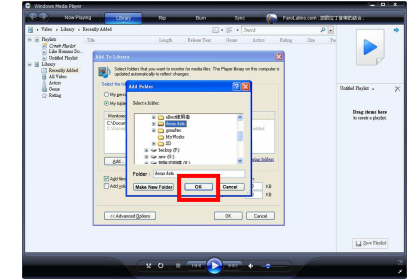
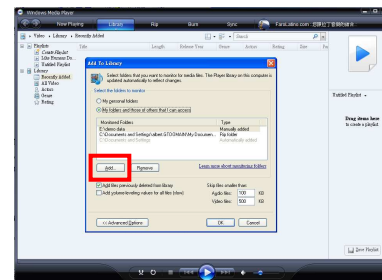
Step 2: Launch the Windows Media Player Version 11 and the window below will appear.



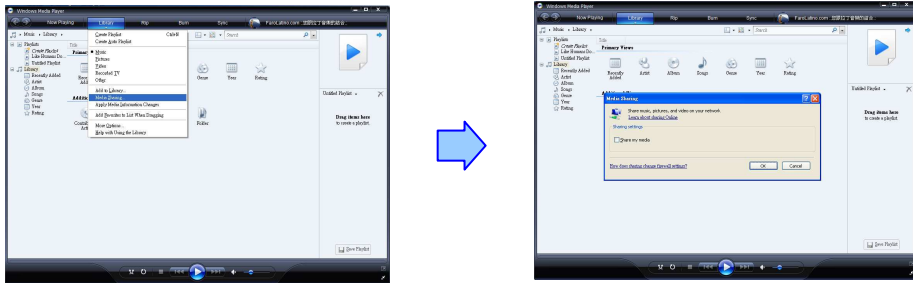
Step 3: Click the “Library” tab, and then click “Add to Library”.



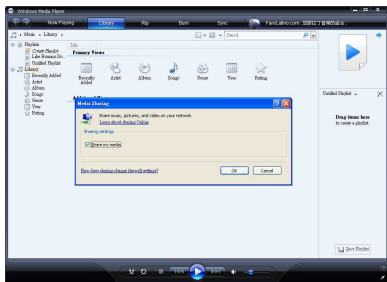
Step 4: Click “Add” and select the folder containing the media files you want to share, and then click the “OK” button.



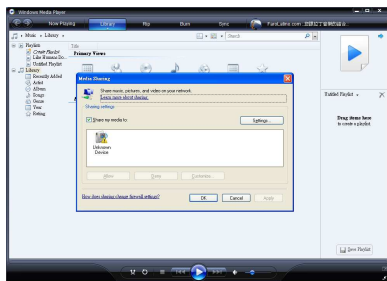
Step 5: Click the “Library” tab, and then click “Media Sharing”.



Step 6: Select the “Share my media”, and click “OK”.

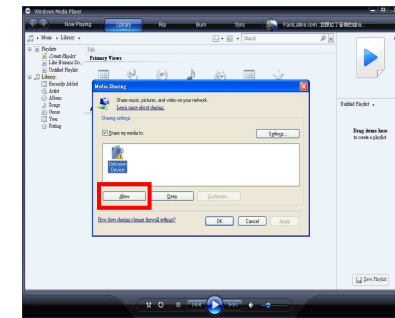


Step 7: In the Media Sharing dialog box, select the “Share my media” check box.

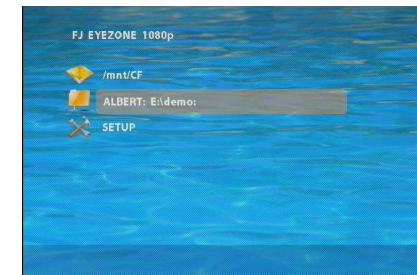


Step 8: Confirm that the SIRKOM SRK-1080P-F is connected to the network.

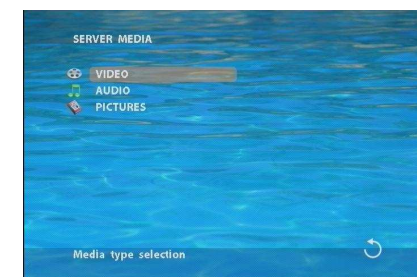
In the list of devices below the “Share my media to” check box, select the device (SIRKOM SRK-1080P-F), and click “Allow” to share the media files.



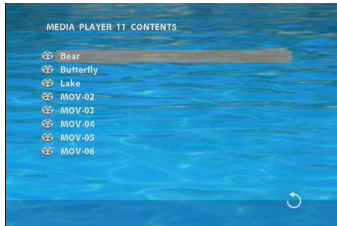
Step 9: The shared folder will appear on the screen of the SIRKOM SRK-1080P-F. Select the folder and click the “ENTER” button on remote control to go into the folder.



Step 10: Select the type of data (VIDEO/ AUDIO/ PICTURES) you want to play, and then press the “ENTER” button on remote control.



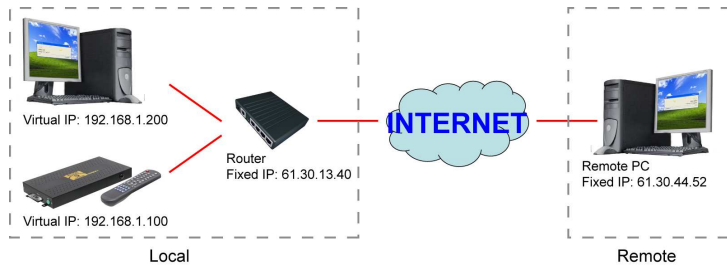
Step 11: Select the file you want to play, and press “ENTER” or “PLAY” button on the remote control to play the file.



NOTE: If the media files shared from PC are not listed on screen, restart your PC.

8.4 DOWNLOAD / UPLOAD MEDIA FILES

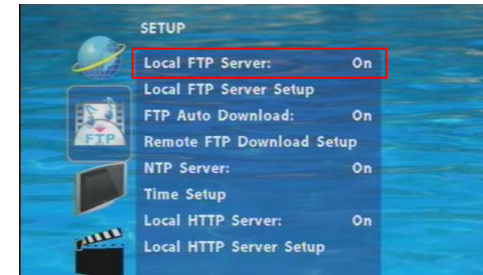
Method 1: Connect by IE Browser



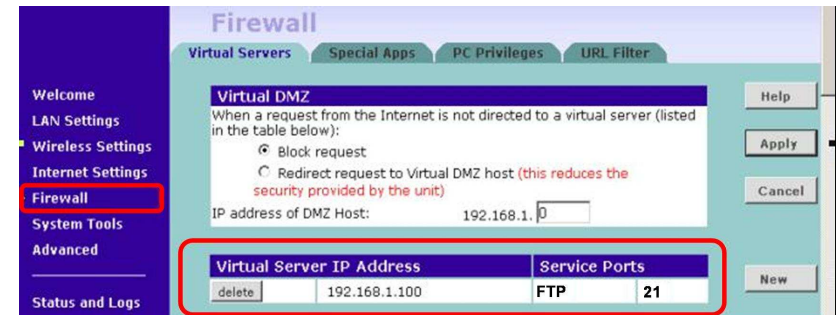
Step 1: Confirm the “IP Assigned by DHCP” has been disabled, then enter the “Network Setup” item, and type IP Address (example. 192.168.1.100), Mask and Gateway for the SRK-1080P-F (refer to 7.1).



Step 2: Confirm the “Local FTP Server” function has been enabled (refer to 7.1).



Step 3: Please setup your router or firewall, and open a port 21 for the SIRKOM SRK-1080P-F. The following figure is an example, please refer to your user’s manual of router for opening ports.



Step 4: Start IE on PC and type the FTP site or IP:

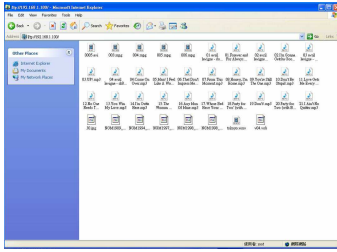
In the local PC, please type “ftp://192.168.1.100”.

In the remote PC, please type “ftp://61.30.13.40:21”.

Step 5: Then type the “User Name” and “Password” and click “Log On” to log on to the SIRKOM SRK-1080P-F Server. (Default User Name: root Default Password: admin)



Step 6: After logging on, all the media files in the CF card on the SIRKOM SRK-1080P-F will be listed. You can download and upload the media files between CF card and your PC.

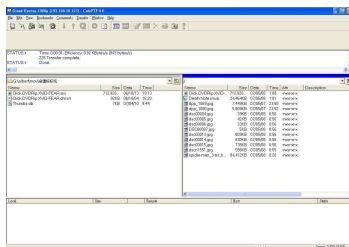


NOTE: After file being download/ upload will stop playing. After downloading files, the SIRKOM SRK-1080P-F will display the movie files automatically.

Method 2: Connect by FTP Tools

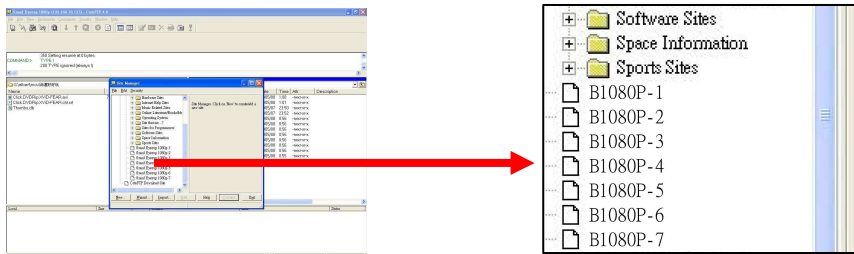
For example.

- If there are multiple SRK-1080P-F, you can use the “**CuteFTP**” tool to connect and manage files easily.

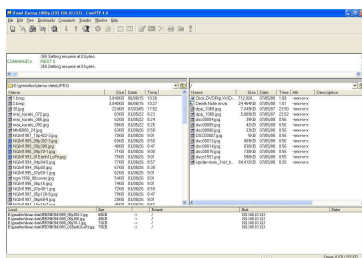


CuteFTP

- You can create all the SIRKOM SRK-1080P-F, and only select the SIRKOM SRK-1080P-F that you want to connect in the list.



- Select the files you want SRK-1080P-F, or download



upload to the SIRKOM the files to your PC.

NOTE: After file being download/ upload will stop playing. After downloading files, the SIRKOM SRK-1080P-F will display the movie files automatically.

8.5 RS-232 FUNCTION (RS-232 cable is optional)

Use the tool “Tera Term” or other tools to control the SIRKOM SRK-1080P-F with ASCII command.

NOTE. 1. Baud Rates:

- Firmware Updating: Set up the baud rate as “115200”.

- ASCII Command: The available baud rates is 38400.

2. The reaction time of SRK-1080P-F is around three seconds.



Keyboard Layout

q : POWER	- : VOL -	w : SLOW
R : RETURN	* : MUTE	> : NEXT
! : REPEAT	S : SELECT	< : PREW
~ : SETUP	A : Auto Download	u : UP
# : TV MODE	p : PLAY	d : DOWN
% : AutoPlay	P : PAUSE/STEP	l : LEFT
i : INFO	x : STOP	r : RIGHT
m : NTSC/PAL	f : FFW	s : ENTER
\$: SEARCH	b : REW	C : CLEAR
+ : VOL +	(XXXXX.XXX) : Play The File (xxxxx.xxx is the file name) NOTE : Must include the round brackets.	

[number]: Play the file by index. (numbers < upper case letters < lowercase letter)

■ Pin Assignment

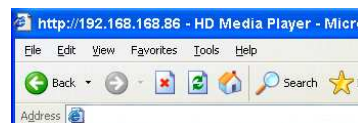
D Sub 9Pin Female	D Sub 9Pin Female
Pin 1	Pin 4
Pin 2	Pin 3
Pin 3	Pin 2
Pin 4	Pin 1
Pin 5	Pin 5
Pin 6	Pin 6
Pin 7	Pin 8
Pin 8	Pin 7
Pin 9	Pin 9

9. HTTP COMMAND FUNCTION

- Confirm that the SIRKOM SRK-1080P-F is already connected to the network. (Refer to 7.1)
- Confirm the “Local HTTP Server” function has been enabled, and the “Local HTTP Server Setup” set has been completed (refer to 7.2).
- Set your router or firewall, and open a port 80 for the SIRKOM SRK-1080P-F. The following figure is an example, please refer to your user’s manual of router for opening ports.



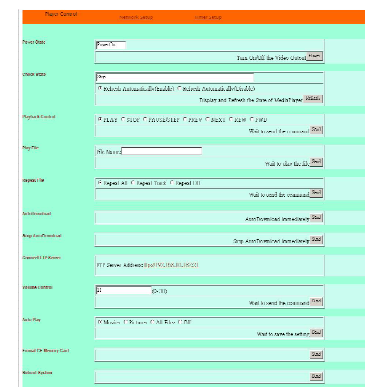
- **Start IE on PC and type the HTTP site or IP:**
 In the local PC, please type “http://192.168.1.100”.
 In the remote PC, please type “http://61.30.13.40:80”.
- Type the “User Name”, “Password” and click “OK” to log on. (Default User Name: **root** Default Password: **admin**)



- There are three items: “Player Control”, “Network Setup” and “Timer Setup” in the window.

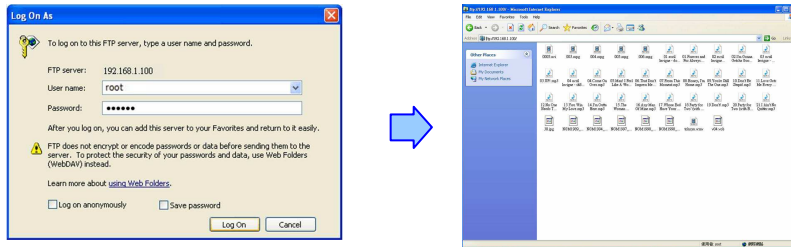


9.1 PLAYER CONTROL



- **Power State:** Turn on/ off the SRK-1080P-F.
- **Check State:** Check the current state of SRK-1080P-F.
- **Playback Control:** Control the SRK-1080P-F to play file/ stop playback/ pause the playback/ play the previous file/ play the next file/ rewind movie/ forward movie.
- **Play File:** Enter the file name that you want play, and click “Send” to play the file immediately.
- **Repeat File:** Select the repeat mode.
- **Auto Download:** Click “Send” to execute the auto download function immediately.
Note: The “FTP Auto Download” function must be turned on and completed set.
- **Stop Auto Download:** Click “Send” to stop the auto download function immediately.

- **Connect FTP Server:** Click the FTP server address to connect to the SRK-1080P-F, and enter the user name and password (Default User Name: **root**, Default Password: **admin**) to log on. After logging on all the media files in the CF card on the SIRKOM SRK-1080P-F will be listed. You can download and upload the media files between CF card and your PC.



- **Volume Control:** Enter the value for volume (0-30).
- **Auto Play:** Select the auto play mode (movies/ pictures/ All Files/ off).
- **Format CF Memory Card:** Directly format the CF card.
- **Reboot System:** Click “Send” to reboot the SRK-1080P-F immediately.

9.2 NETWORK SETUP



- **Network Interface:** Select your network connection Disable/ RJ45 (Wi-Fi function only for B1080PW).
- **DHCP:** Enable/ Disable the DHCP function.
- **IP Address:** Enter the fixed IP address, Mask, Gateway and DNS for the SIRKOM SRK-1080P-F.
- **FTP Server:** Enable/ Disable the FTP Server function. You can also change the User ID, Password and port of the FTP Server.
- **HTTP Server:** Enable/ Disable the HTTP Server function. You can also change the User ID, Password and port of the HTTP Server.
- **Media Player 11:** Enable/ disable the Media Player 11 server.
- The “WiFi Encryption Mode” and “WiFi SSID” items only for B1080PW.
- **Reboot System:** After setting, click “Send” to reboot the SRK-1080P-F.

9.3 TIMER SETUP

Player Control	Network Setup	Timer Setup
NTP Timer		
NTP Server	<input type="text" value="204.152.184.72"/>	
Time Zone:GMT:	<input type="text" value="+8 :00"/>	
Info:	Wait to store setting ,then please reboot <input type="button" value="Send"/>	
AutoDownload		
Download On Time	<input checked="" type="radio"/> Enable <input type="radio"/> Disable	
DownloadTime	<input type="text" value="20 :00 :00"/>	
Save the setting	<input type="button" value="Send"/>	
Remote FTP		
Remote FTP IP Address	<input type="text" value="ftp.test.com.tw"/>	
Remote FTP UserID	<input type="text" value="ipmedia"/>	
Remote FTP Password	<input type="password" value="*****"/>	
Remote FTP Port	<input type="text" value="21"/>	
Remote FTP Path	<input type="text" value="demo"/>	
Info:	Wait to store setting ,then please reboot <input type="button" value="Send"/>	
AutoPower		
Auto Power	<input checked="" type="radio"/> Enable <input type="radio"/> Disable	
PowerOnTime	<input type="text" value="08 :00 :00"/>	
PowerOffTime	<input type="text" value="18 :00 :00"/>	
Save the setting	<input type="button" value="Send"/>	
Reboot System		
	<input type="button" value="Send"/>	

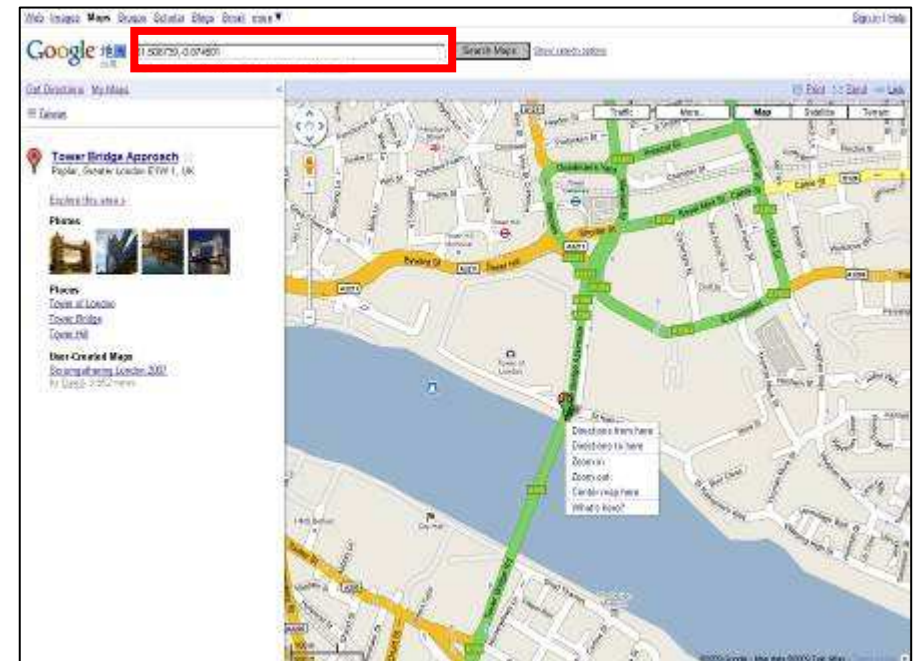
- **NTP Server:** Set the NTP Server.
- **Auto Download:** Set the auto download time.
- **Remote FTP:** Set the Remote FTP Server.
- **Auto Power:** Enable/ disable the auto power on/ off function and set the time of power on/ off.
- **Reboot System:** After setting, click “Send” to reboot the SRK-1080P-F.

10. GPS FUNCTION

The SRK-1080P-F supports GPS Function. When install the SRK-1080P-F in a vehicle, like a bus or train, user can configure the SRK-1080P-F to play media files by the location of SRK-1080P-F.

Step 1: Set the Play Button mode to “Repeat Default”. About how to set the Play Button Mode, please refer to section 7.5

Step 2: Find the coordinate of the target location. User can find the coordinate of the target location via GIS software, for example, user might search the coordinates of the target location via Google Map service.



Step 3: Create a text file and name this file as “GPSPos.cfg”. Use notepad to edit this file as shown below.

```

GPSPos.cfg - Notepad
File Edit Format View Help
Range 65
StaCount 3
Latde1 2500.16082
Lator1 N
Londe1 12126.56061
Lonor1 E

Latde2 2459.79050
Lator2 N
Londe2 12129.2010
Lonor2 E

Latde3 2500.19400
Lator3 N
Londe3 12126.53884
Lonor3 E
  
```

- **Range:** Use this value to define the distance in meter, when the actual distance between the SRK-1080P-F and the target location is smaller than this value, the associated video file will be played. For example, when this value is set to 65, the video file associated with some target location will be played if the distance between the SRK-1080P-F and the target location is less than 65 meters.
- **StaCount:** Define how many locations will be counted as target location.
- NOTE:**
- **Latdel:** The latitude of the target location. Before the dot are the hour and minute parts of the latitude. There could be up to 6 digits after the dot.
- **Latorl:** The orientation of the target location's latitude, N for north and S for south.
- **Londel:** The longitude of the target location. Before the dot are the hour and minute parts of the longitude. There could be up to 6 digits after the dot.
- **Lonorl:** The orientation of the target location's longitude, W for west and E for east.

Step 4: Copy the GPSPos.cfg and associated video files to CF card. Plug the CF card to SRK-1080P-F and turn on the SRK-1080P-F.

The first video file (file name in alphabetical order) will be played repeatedly until the SRK-1080P-F approaching the target location. When the SRK-1080P-F approaches the target location, the video file associated with the target location will be played.

The mapping rule between the video files and the target location is as below:

File Name in Alphabetical Order	Corresponding Relation
00.wmv	As the default video
01.wmv	Associated with the first coordinate setting in GPSPos.cfg
02.wmv	Associated with the second coordinate setting in GPSPos.cfg
⋮	⋮

11. TROUBLESHOOTING

Situation	Check Point
No Picture	<ol style="list-style-type: none"> 1. Check power cable and power switches. 2. Ensure the video cables are connected between the player and the SIRKOM SRK-1080P-F. 3. Press the “TV MODE” button on the remote control to select the correct output mode. 4. Make sure the file format on the CF card is correct. 5. Check if the display device is switched to correct video input source.
No Response From the Remote Control	<ol style="list-style-type: none"> 1. Ensure that there are 2 batteries (AAA size) in the remote control and they are inserted the correctly. 2. Check for any barrier between the remote control and the product.
No sound	<ol style="list-style-type: none"> 1. Check if the mute function is on. 2. Check if the volume is set properly. 3. Check if audio cable has been connected correctly.
Network Not Working	<ol style="list-style-type: none"> 1. Check your IP settings on the Network Setup page. (refer to 7.1) 2. If using wired network, make sure the network cable is plugged in on both the SIRKOM SRK-1080P-F and your network hub.